

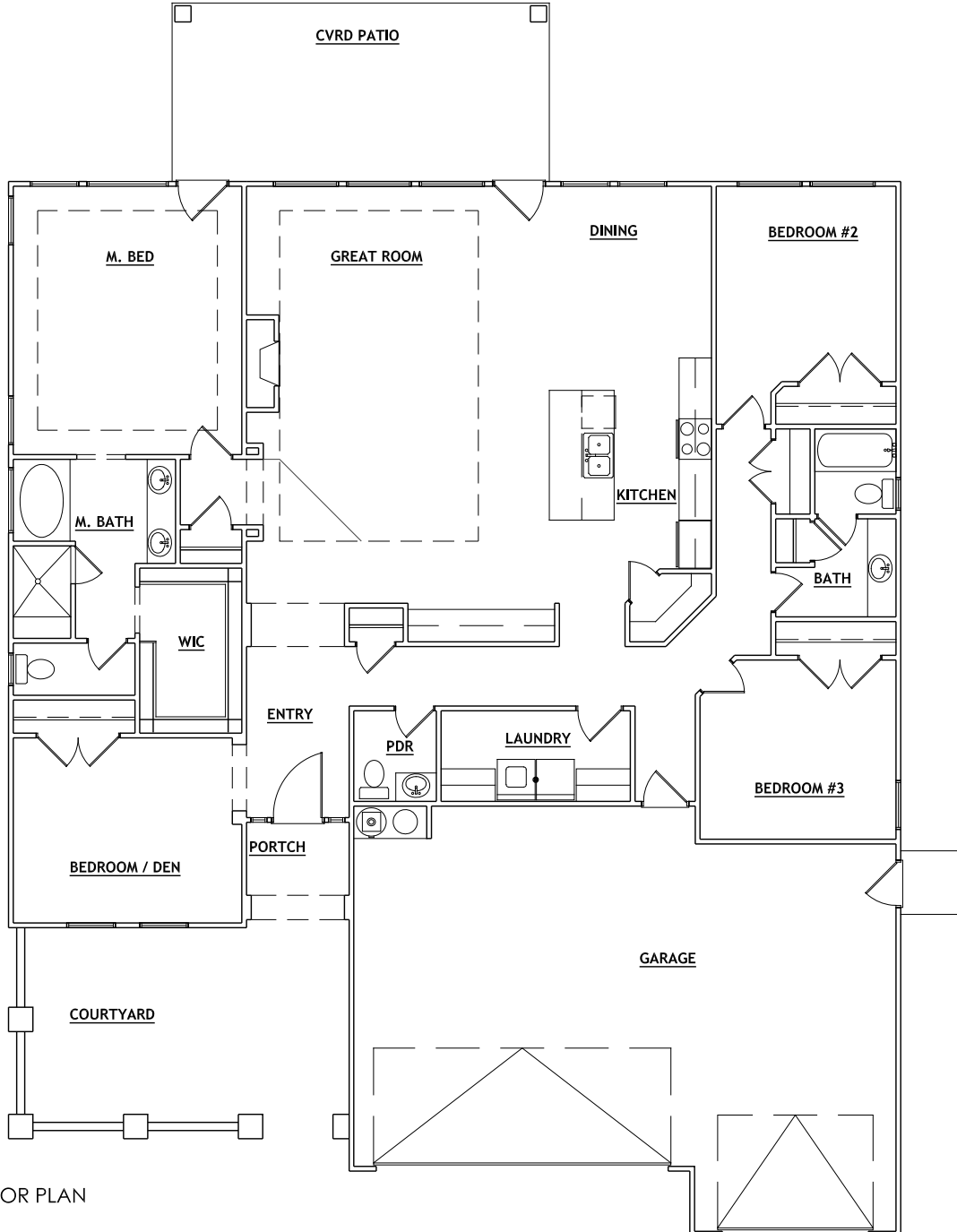
THE JAMESON

PLAN DETAILS:

Width - 55'-0" x 75'-10"
3/4 BEDROOM 2.5 BATH
MAIN FLOOR = 2,257 sq. ft.
TOTAL = 2,257 sq. ft.



ELEVATION



MAIN LEVEL FLOOR PLAN

Notice: The designs shown and described herein including the technical drawings, graphic representation & models thereof, are proprietary & can not be copied, duplicated, or commercially exploited in whole or in part without the sole and express written permission from VanGilder Homes. All square footage and measurements are approximate. All exterior elevations and floor plans are for illustration purposes only and are subject to change and prior sale at any time without notice or obligation.

